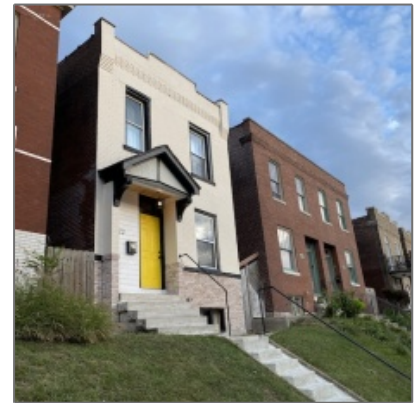
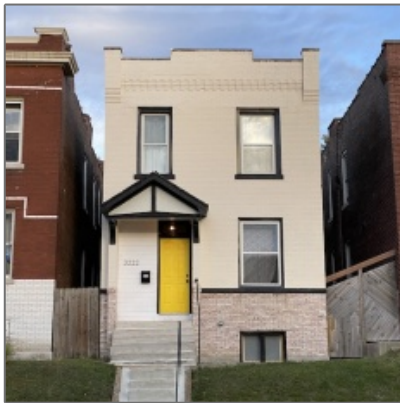




3222 Michigan Ave. Saint Louis, MO 63118

1,862 Sqft -



Basic Details

Contact Sam at (314) 717-1050 or by email at -
Sam@woodfordhomesgroup.com

Listing Type:	Sold
Brand:	Woodford Homes
Down Payment (w/ Grants):	\$1,500
Monthly Payment:	\$1,225
Sale Price:	\$219,000
Bedrooms:	3
Bathrooms:	2
Square Feet:	1,862 Sqft
Year Built:	1913
Basement:	Yes
Parking:	2 Garage
High School:	Roosevelt High School

Copyright 2019 | Woodford Homes LLC